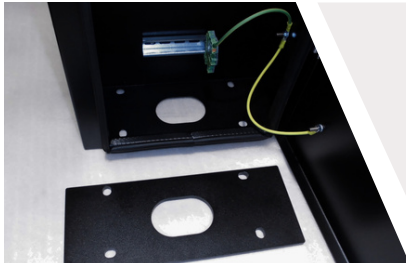
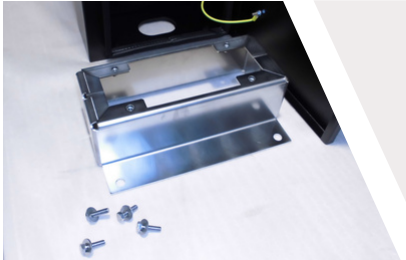


## cPH2 Stele



### Scope of delivery of the stele

- stele housing (incl. built-in earthing cable)
- Mounting plate (fixed with cable ties for secure delivery)
- 4x screws for mounting the Wallbox on the stele



### Inserting the mounting plate

- tilt the sheet a little to insert it easily
- be careful not to damage the earth cable



### Fastening the stele

- you get more stability due to the internal mounting plate  
- Cable ties can be removed
- by screwing the stele to the plinth, the sheet metal is fixed to the bottom of the stele.



### Completion

- Concrete foundation (in the ground)
- Stainless steel plinth
- Stele
- Wallbox

